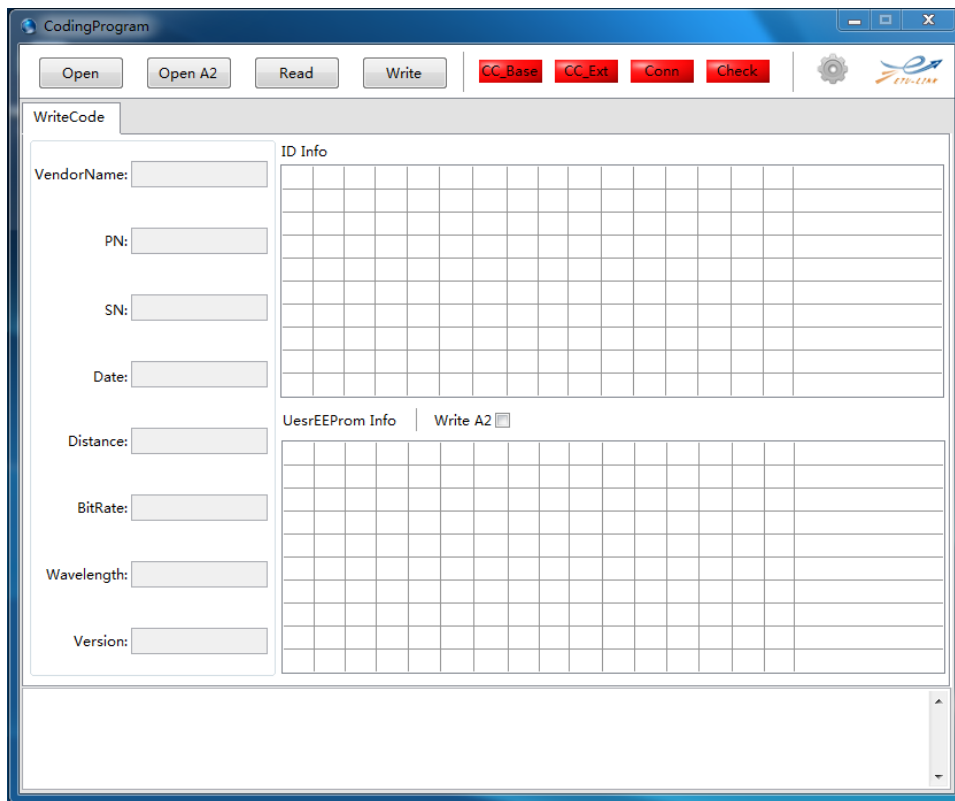
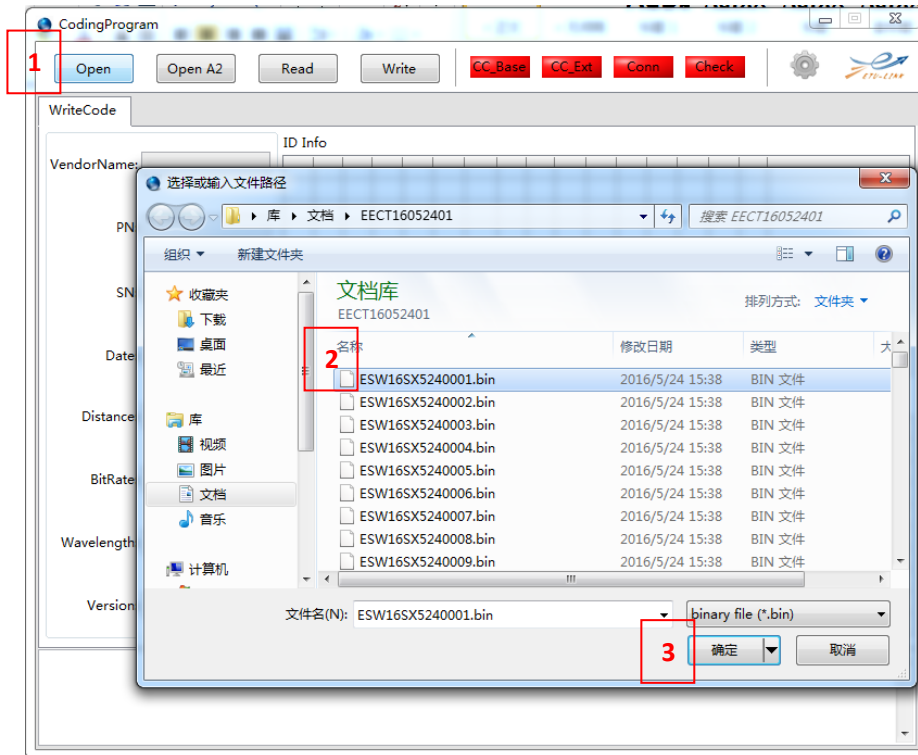


1. Double click **CodingProgram.exe** or its corresponding shortcut, open the program main interface.

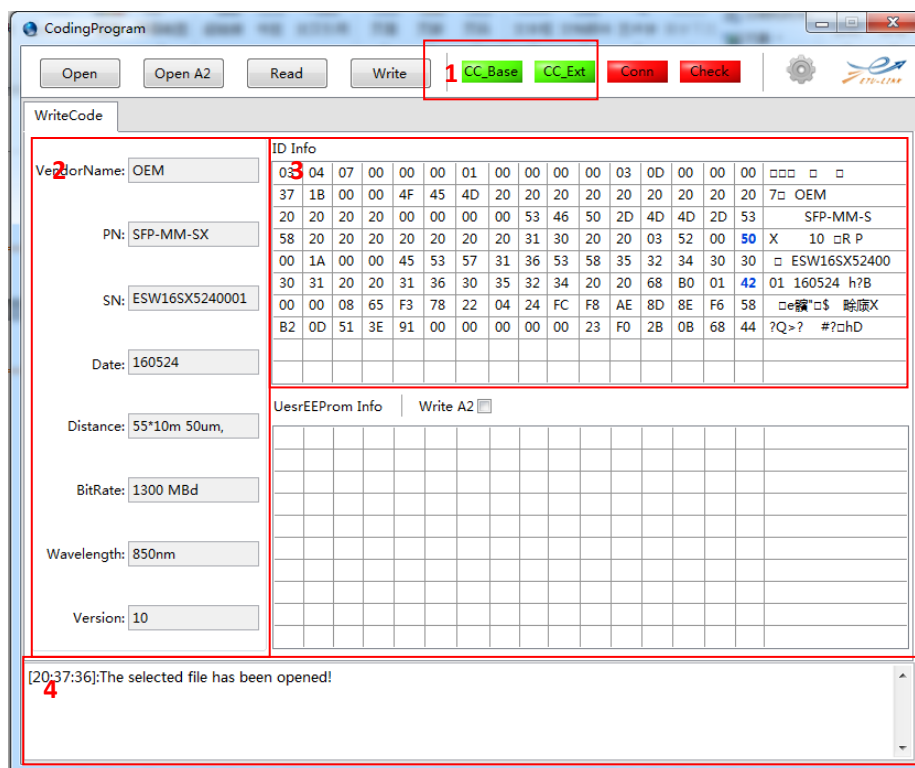


Application main interface

2. Click **“Open”**, browse to the code file you need to write, click “open” to add to the “ID Info list”



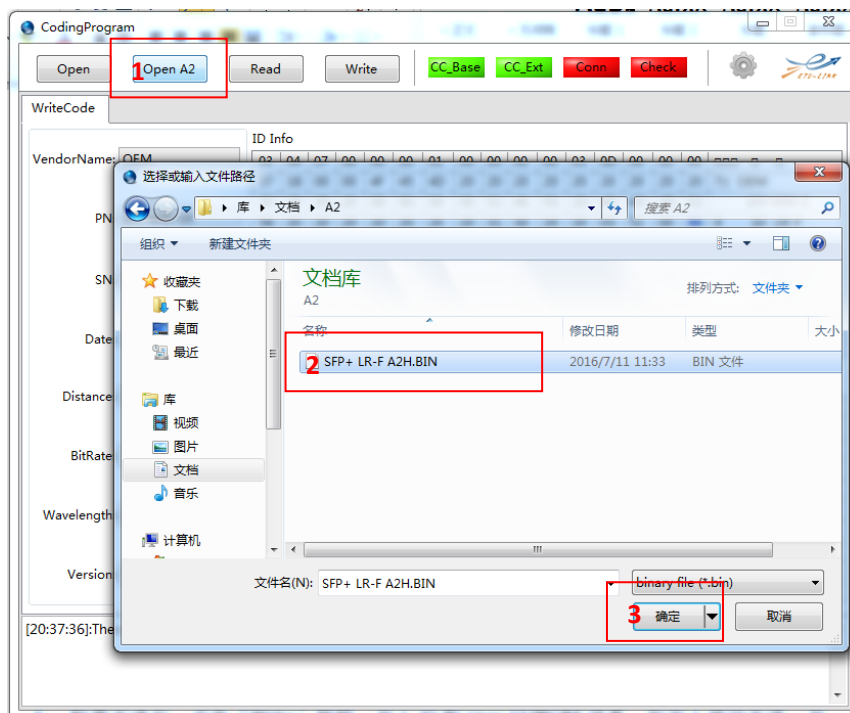
Follow the above steps to open the file you need to write to.



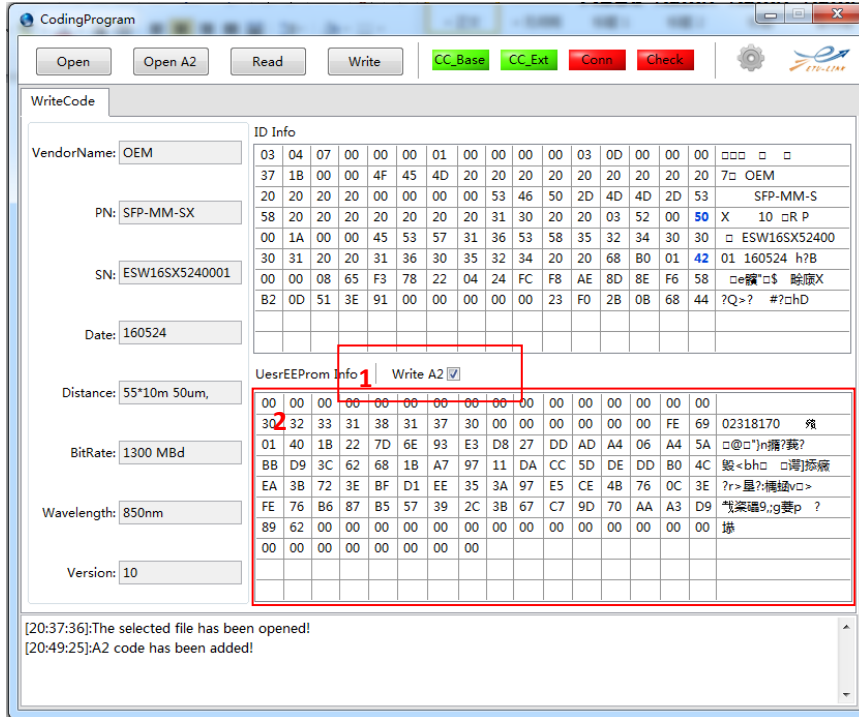
Open code file

As above picture, “Area 1” is the verify status for Code file. If correct, verify status should be highlighted in green; “Area 2” is the basic ID information analysis from the code; “Area 3” is the file code, contains all the information of the module ID; “Area 4” is operation log.

3. If need to write A2 address User EEPROM code, click “Open A2”, select the A2 address code need to write and click **【Yes】** to open.

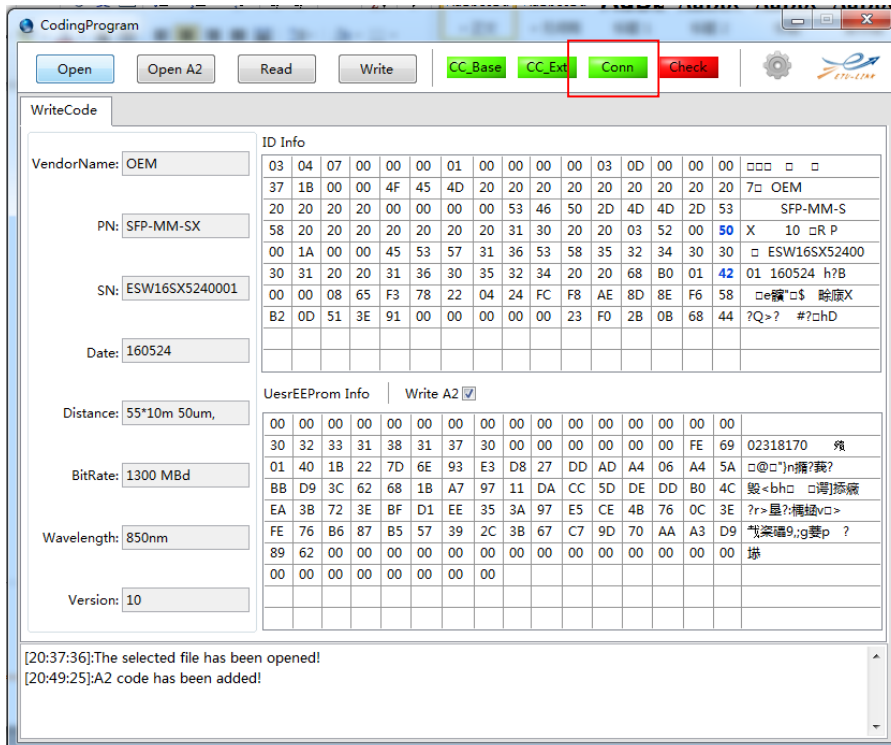


In turn according to the operation steps 1, 2, 3 open A2 coding



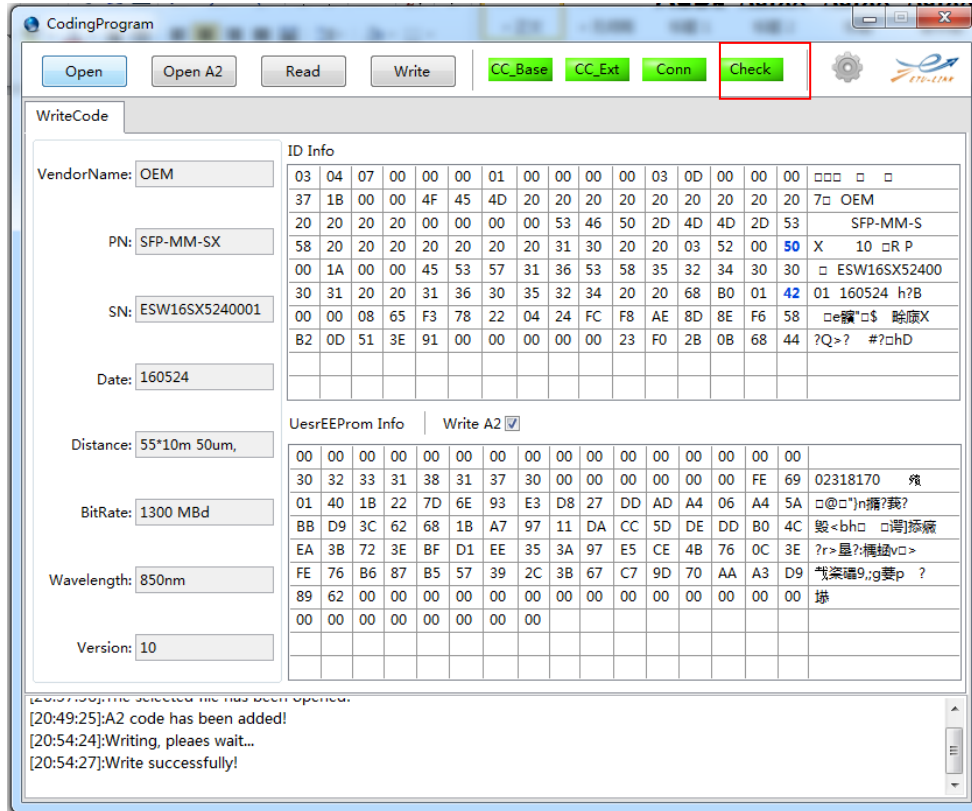
Select **【Write A2】** , write A2 coding, area 2 use A2 file code

4. Connect to write code board and optical transceiver, If correct, module connection indicator “Conn” should be highlighted in green.



After connecting the module, the connection indicator is highlighted, then can start

5. After check, click “Write”, write ID and User EEPROM information, if successfully, write monitoring indicator “Check” button should be highlighted in green. Otherwise, the write failed, then need to re write code.



Write success, check correct